

# Bikes In Schools

## Hampton Hill School



**RT**

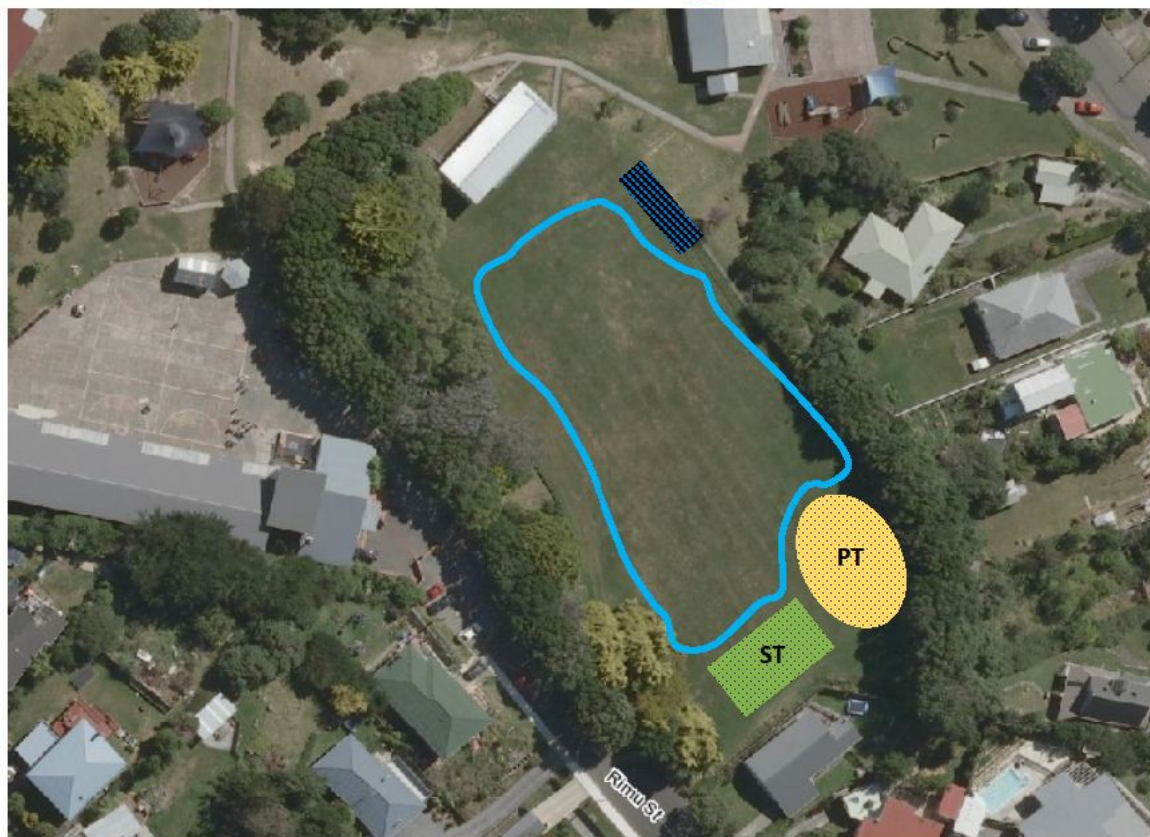
RIDING TRACK

**ST****SKILLS TRACK****PT**

PUMP TRACK



BIKE CONTAINER (40 foot)

**HAMPTON HILL SCHOOL (2852)****Rimu St, Tawa, Wellington**

Principal: Kelly O'Leary

**PROPOSED BIKE TRACKS AND BIKE STORAGE**

(TRACKS ARE NOT TO SCALE, BIKE CONTAINER TO SCALE)

APPROX LENGTH OF RIDING TRACK: 230m

Drawing Date: 5/11/15, v1

info@bikeon.org.nz

www.bikeon.org.nz

Paul McArdle 027 747 9192

**Hampton Hill  
School**  
CHANGING PROFILES TO THRIVE**Bikes  
in Schools**

# Ara Tawa Pathway

(opened May 2014)





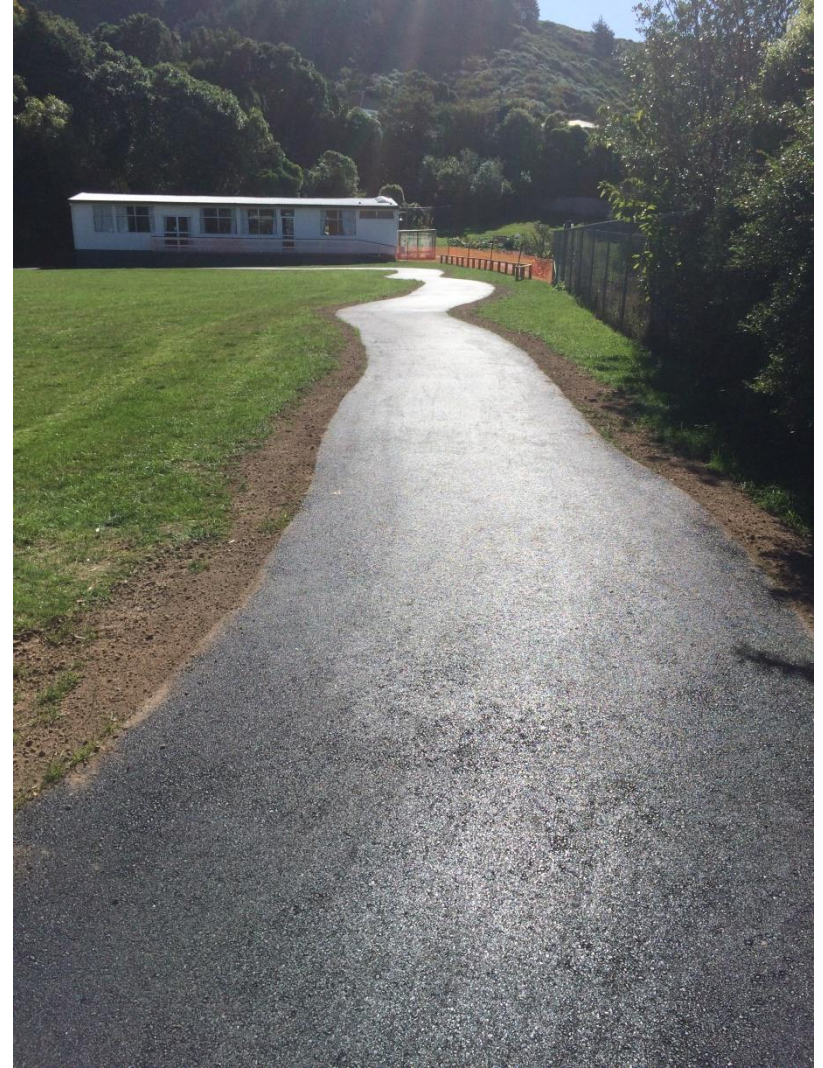
# Starting out







# Loop track





# Skills track





# Pump track





# Container



# Balance bikes







# Bike-a-thon

