

Wi

te





Without Rails – Update

The story of the Little River Rail Trail

Chris Freear, Trust Chair

OVERVIEW



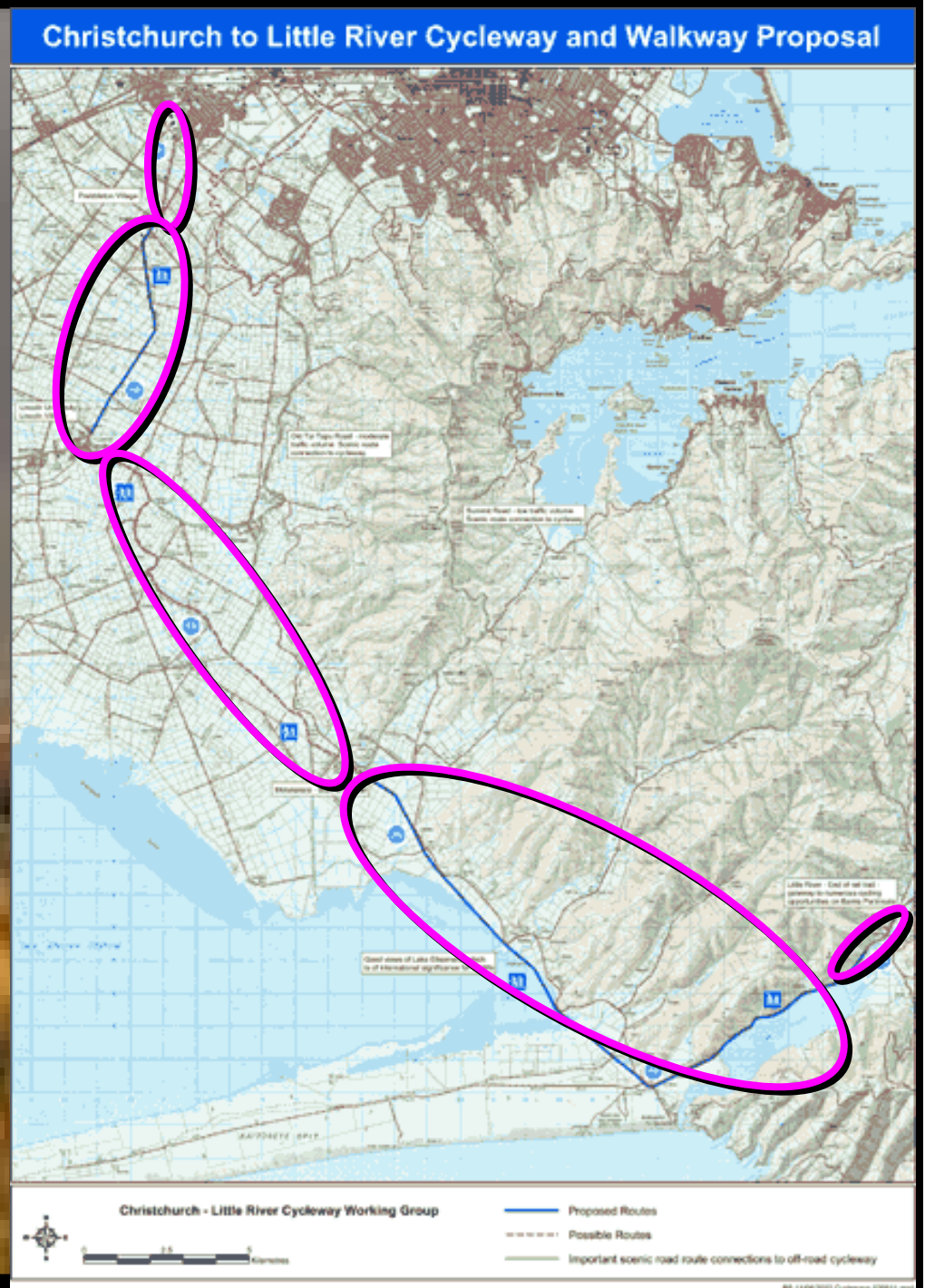
- The vision
- Route
- Progress
- Users
- A Big thank you
- Moving pictures

THE VISION

- An off-road, high quality cycle way / walk way
- From Hornby to Little River
- 44km in length (26km in operation)
- Recreational & Commuter function
- An intergenerational community asset

ROUTE

- Hornby - Prebbleton
- Prebbleton - Lincoln
- Lincoln - Motukarara
- Motukarara – Catons Bay
- Catons Bay - Little River



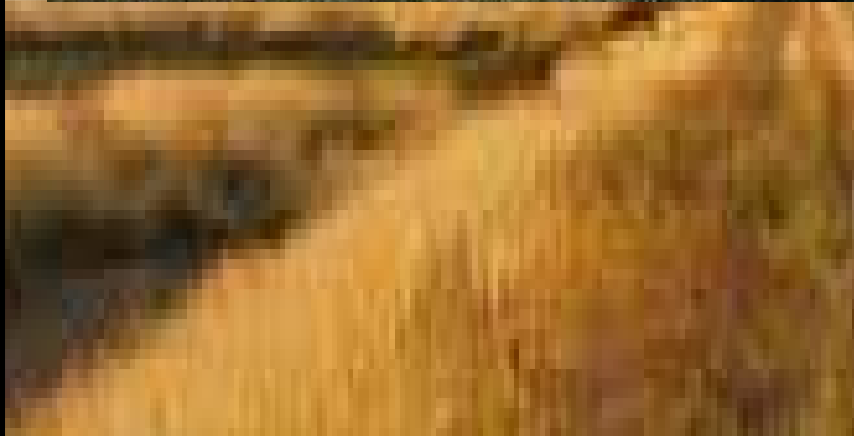
PROGRESS

■ Motukarara – Catons Bay

Opened May 2006

- 20km track
- bridges
- fencing
- cattle stops
- toilets
- station
- plantings

BEFORE - AFTER



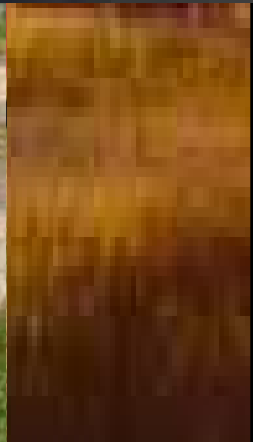
BEFORE - AFTER



BEFORE - AFTER



BEFORE - AFTER



PROGRESS

■ Prebbleton – Lincoln

Opened Nov 2006

– 7km sealed

– scene of 2006 Mayoral Challenge



PROGRESS

■ Prebbleton – Lincoln

Opened Nov 2006

– 7km sealed

– scene of 2006 Mayoral Challenge



USERS

- ~10,000 in first year
- 53% female
- 97% cycle
- 59% first time users
- 8% ride alone
- 50% buy something
- Over 75% want to ride further

A BIG THANK YOU

Over \$1,700,000 Raised

PLATINUM:

- Sustainable Management Fund
- Eureka Gaming Machine Trust
- Canterbury Community Trust
- Ministry of Tourism

A BIG THANK YOU

Over \$1,700,000 Raised

GOLD:

- Scottwood Gaming Machine Trust
- Caversham Gaming Trust
- Pub Charity
- NZ Lottery Grants Board
- The Southern Trust

BRONZE:

- Lion Gaming
- Rotary Club of Hornby Charitable Trust
- The Canterbury Foundation
- NZ Community Trust

A BIG THANK YOU

Project Supporters:

- Environment Canterbury
- Department of Conservation
- Selwyn District Council
- Christchurch City Council
- Wairewa Runanga
- Takuahi Research & Development Company Ltd
- Rapaki Runanga
- Te Waihora Board
- Te Runanga o Ngai Tahu
- Rotary Club of Lincoln
- Rotary Club of Hornby
- Waihora Ellesmere Trust
- Lincoln Community Committee
- Prebbleton Community Assn
- Riccarton-Wigram Community Board
- Transit New Zealand
- Land Transport New Zealand
- Federated Farmers



SO LETS

HIKE IT !

BIKE IT !!

LIKE IT !!!

A blurred landscape photograph showing a path leading towards a body of water under a cloudy sky. The text "Moving Pictures Time" is overlaid in the center.

Moving Pictures Time