

Getting There – On Foot, By Cycle



New Zealand Government

Jason Morgan, Ministry of Transport
Ian Appleton, Land Transport NZ
Gerry Dance, Land Transport NZ

Outline

- Our Policy Environment
- Our Sector
- Progressing Implementation



Our Policy Environment

Jason Morgan

Our Operating Context: The Drivers

- Climate Change
- New Zealand Energy Strategy (NZES) and New Zealand Energy Efficiency and Conservation Strategy (NZEES)
- Next Steps – Review of the Transport Sector
- Updating the New Zealand Transport Strategy
- NLTP Update
- TSSD Projects



Climate Change

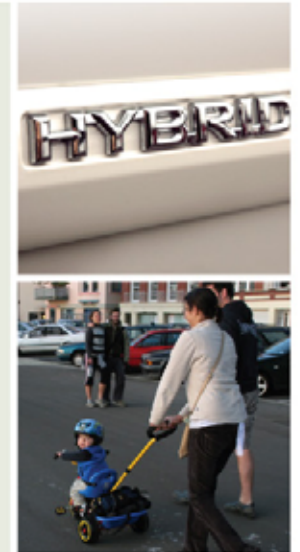
- Growing the economy AND protecting the environment.
- Current focus on Battery Electric Vehicles (BEV) and Biofuels, but a growing awareness of the importance of TBhC, TDM and active and shared modes.





Energy Efficiency

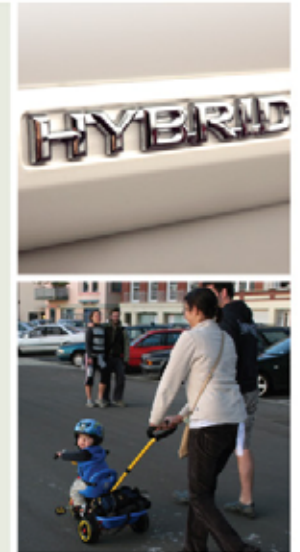
- Reduce per capita greenhouse gas by 50% by 2040
 - Technology > Behaviour
- Reduce SOV VKT by 10% on weekdays in major urban areas by 2015
 - Pricing measures? Stronger TDM focus?
 - Attractive alternatives?
- Set a clear priority for cycling (and walking)



Next Steps

- The Development of a 3-year Government Policy Statement that sets the priority for walking and cycling.
- Merging of Land Transport NZ and Transit NZ

More Sustainable Land Transport?



Update of the New Zealand Transport Strategy

- Discussion document expected to be released for consultation in early December
- Likely to include a range of targets including for 'active modes'
- Will also refer to transport targets recently announced under NZ Energy Strategy and NZEECS
- Consultation until the end of February 2008 including regional meetings



NLTP Update

- Looking at investment trends, issues and options.
- Desire for 'value for money'
- Recognising an inability to afford all the land transport activities
- Strong drivers from energy and environment policy



TSSD Projects

- Strategic Transport Futures (STF)
- Integrated Approach to Transport and Land Use Planning (IAP)
- Influencing the Demand for Transport Services (IDTS)



Our Sector

Ian Appleton

“What is Land Transport doing for Cycling?”

- Land Use Planning
- Travel Behaviour Change
- Infrastructure
- Funding
- Tools & Guidelines



What is sustainable transport?

- “A sustainable land transport system is one that is able to respond and adapt to changing transport needs in a way that leads to a better NZ for current and future generations”
- Being future focused
- Remaining flexible
- Ensuring what we do now is also good for the future

Balancing outcomes



Land use & integrated transport planning

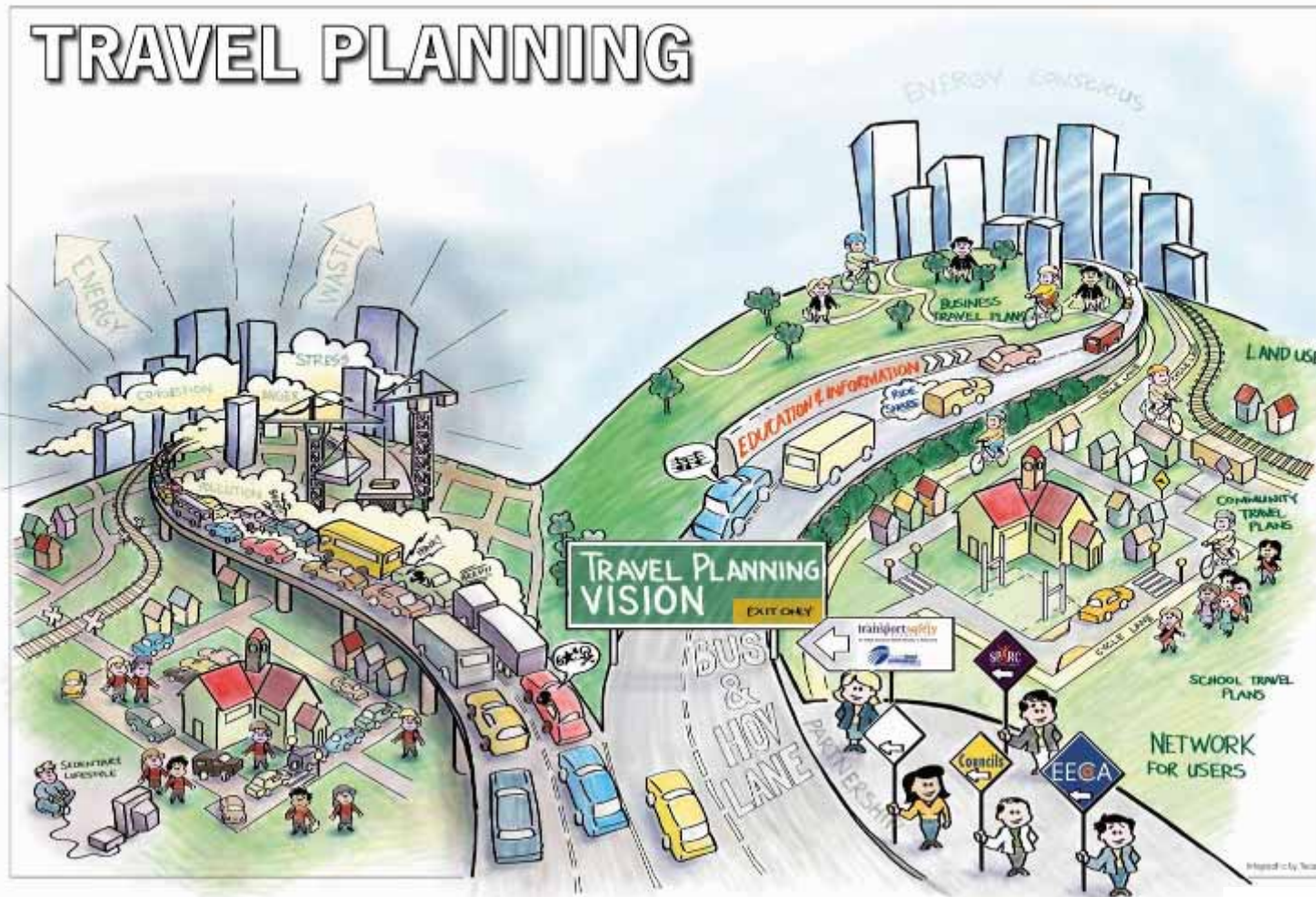


Land use & integrated transport planning

Principles:

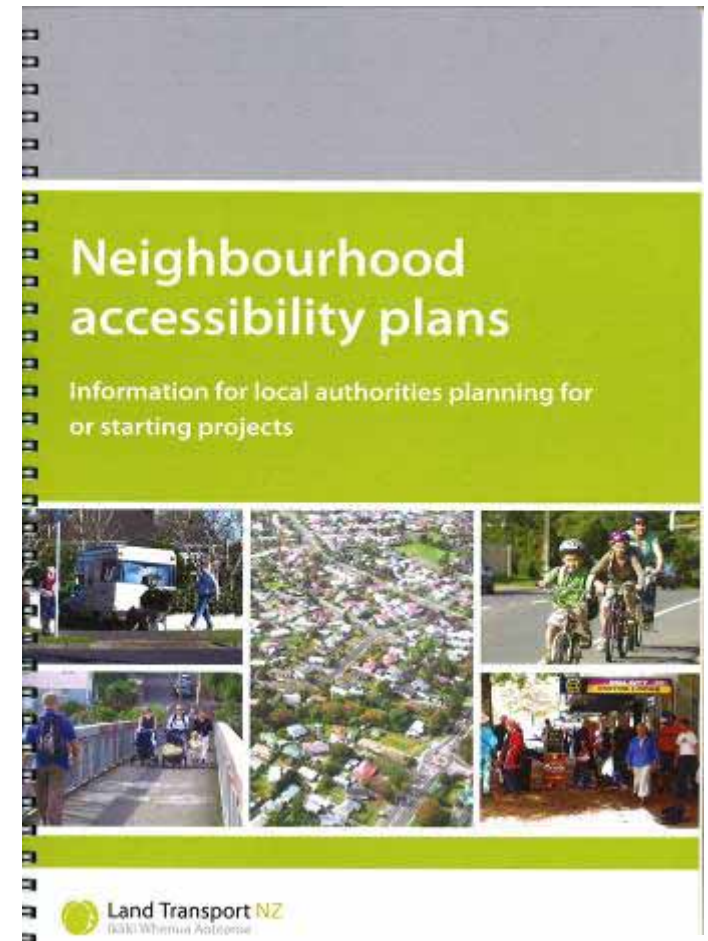
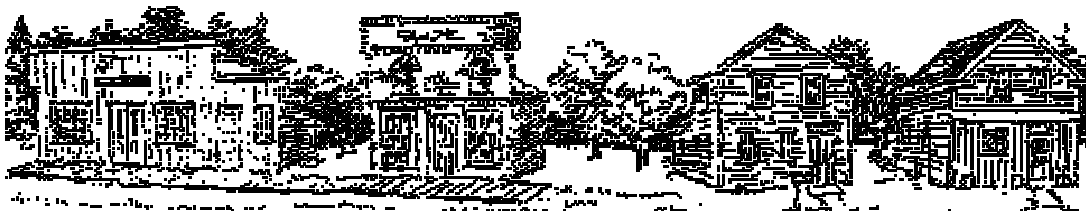
- Long-term strategic planning view
- Recognise local and regional differences
- Minimise the effects of the transport system on adjacent land uses
- Avoid severance
- Restrict sprawl at the urban limit
- Concentrate employment growth and high density development around public transport nodes
- Develop hierarchical systems and layouts for both land use and transport planning

Travel Behaviour Change -Planning



Neighbourhood Accessibility Plans (NAP's) - Education

- To Improve safe access for pedestrians, cyclists and those accessing PT
- A process



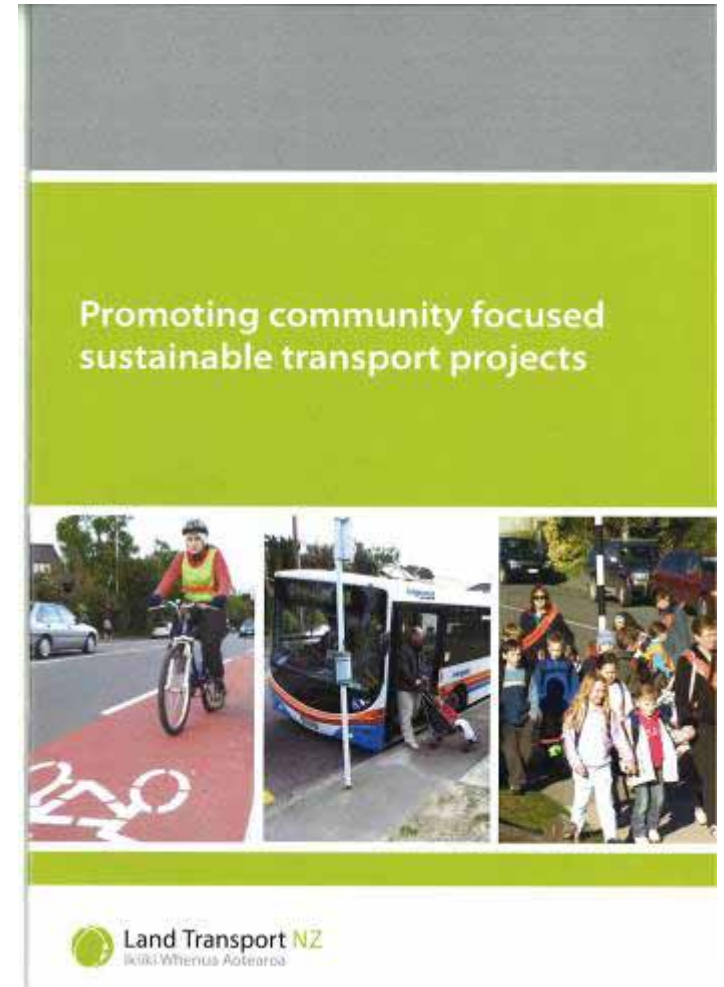
Funding - Programmes Team

Infrastructure (hard):

- Land Transport NZ co-funded
- Walking and Cycling Activity
Class 2007/08 \$14.5 mil

Programmes (soft):

- Community Focussed Activities
2007/08 \$17 mil



Funding – Packages

Walking and Cycling “Packages”

- Encouraging a “package approach” to applications for funding of improvement projects, such as walking and cycling projects.

What packages are:

- Packages are a means of combining two or more projects which: address a common transport issue, problem or opportunity and collectively deliver a better outcome than would be achieved if they were developed and implemented independently.

Standards & Guidelines

Published

- Cycle Network & Route Planning Guide
- RTS 14 – blind and vision impaired pedestrians

Imminent

- Pedestrian Planning & Design Guide
- Pedestrian crossing selection calculation tool
- Non-Motorised User Review

Tools

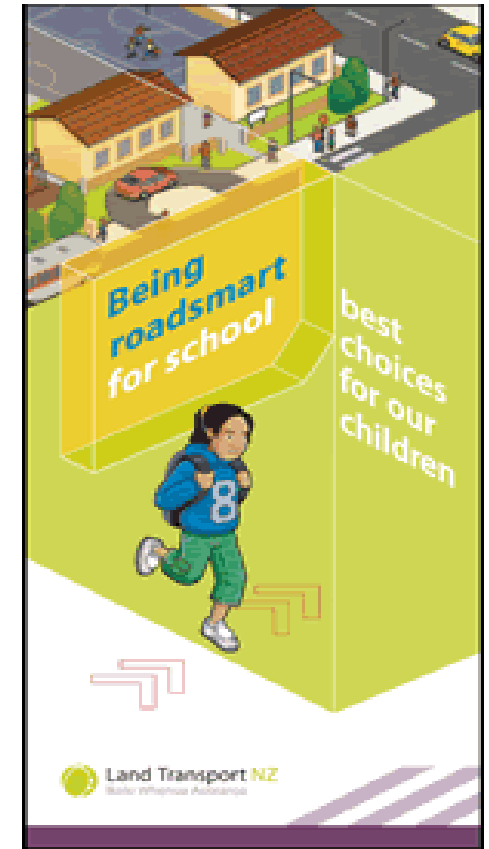
Published

- Walking LOS user perceptions
Community Street Review procedures now on www.levelofservice.com

Ongoing research

- Cycling Level of Service assessment and prediction
- Walking LOS prediction
- Neighbourhood accessibility assessment

Other activities/resources Education



Bike Wise Programme Education



- Bike Wise Week
- Business Battle
- Mayoral Challenge
- Go by Bike Day



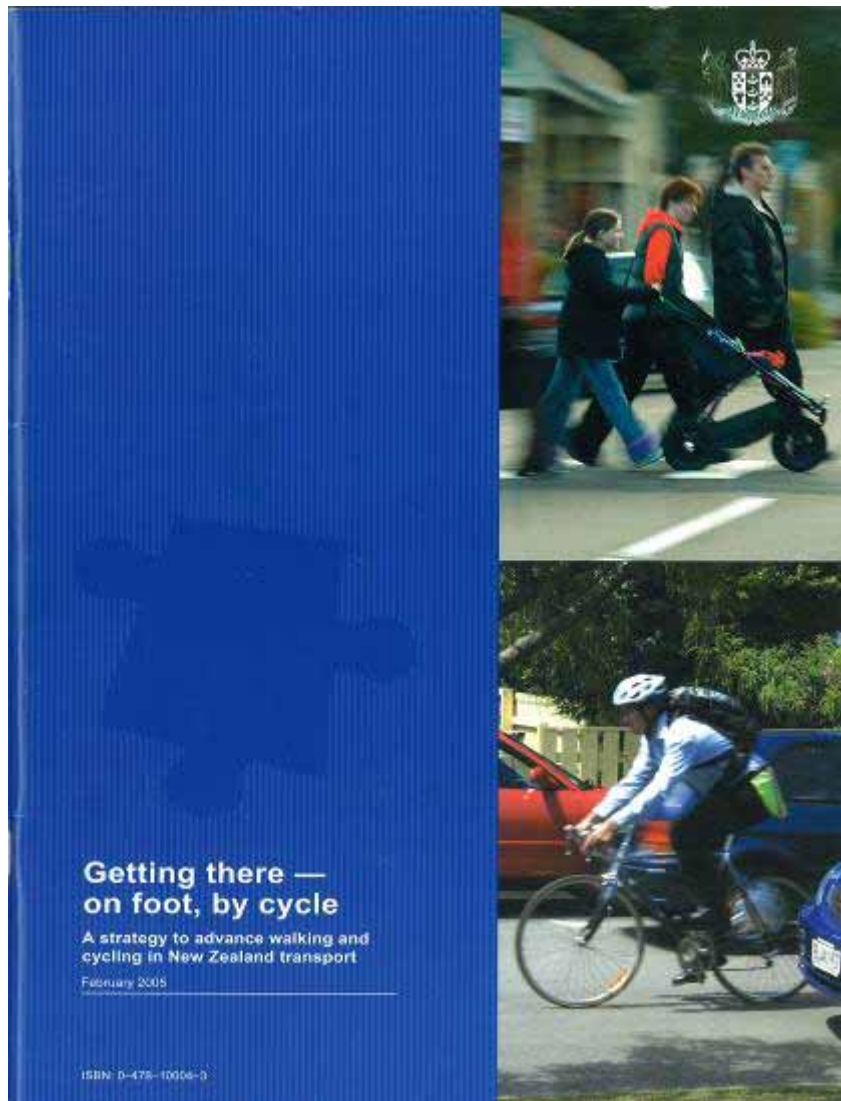
All go for 2008 !! bikewise@landtransport.govt.nz

Progressing Implementation

Gerry Dance

Getting There Strategy

- Government Strategy
- Published February 2005
- VISION: A NZ where people from all sectors of the community walk and cycle for transport and enjoyment





Getting There Implementation

- Strategic Plan
- Published July 2006
- Recognises current action for walking and cycling
- 10 New Strategic Initiatives

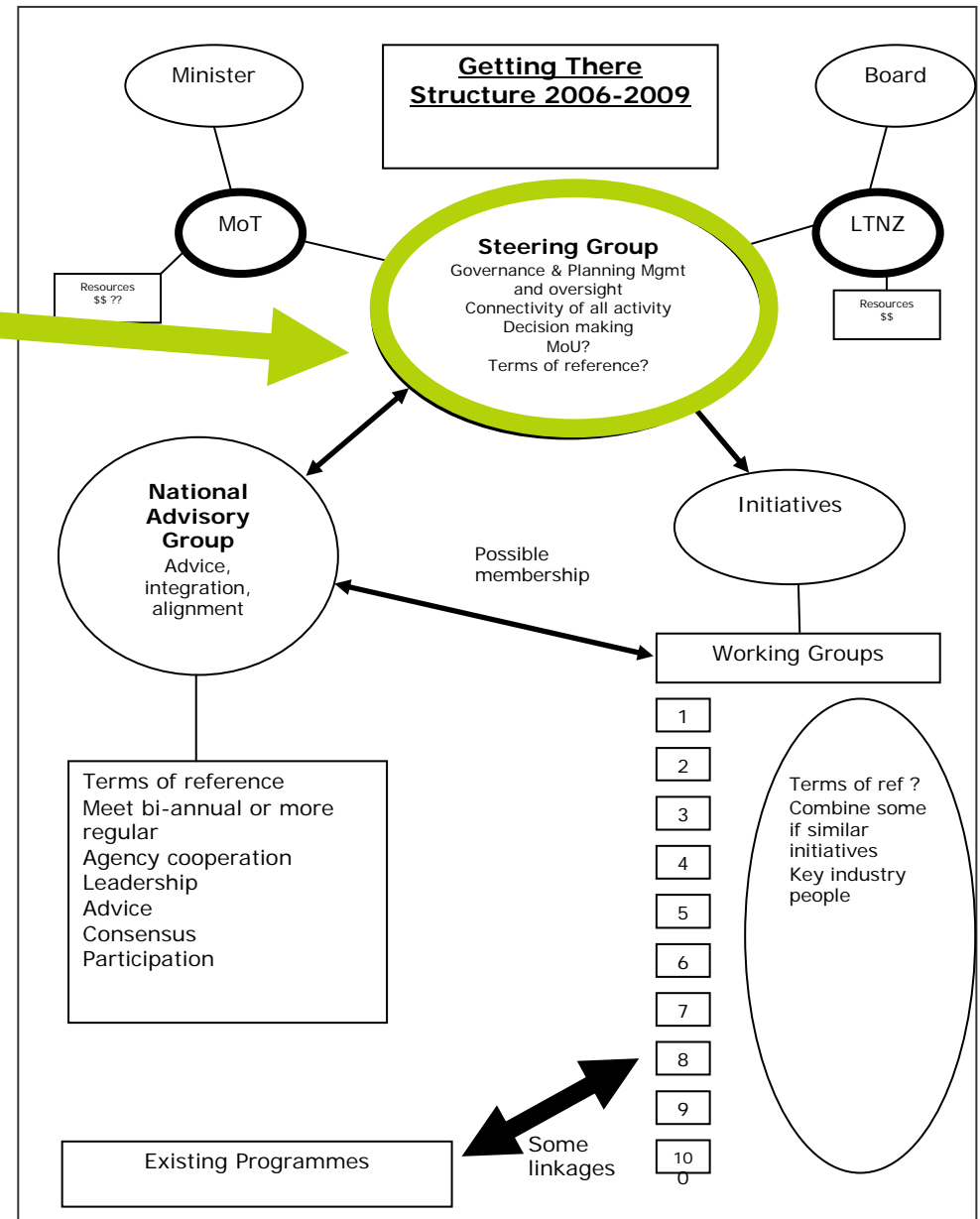
Getting There Steering Group

Sponsors:

- Lyndon Hammond, Land Transport NZ and Megan Beecroft, Ministry of Transport

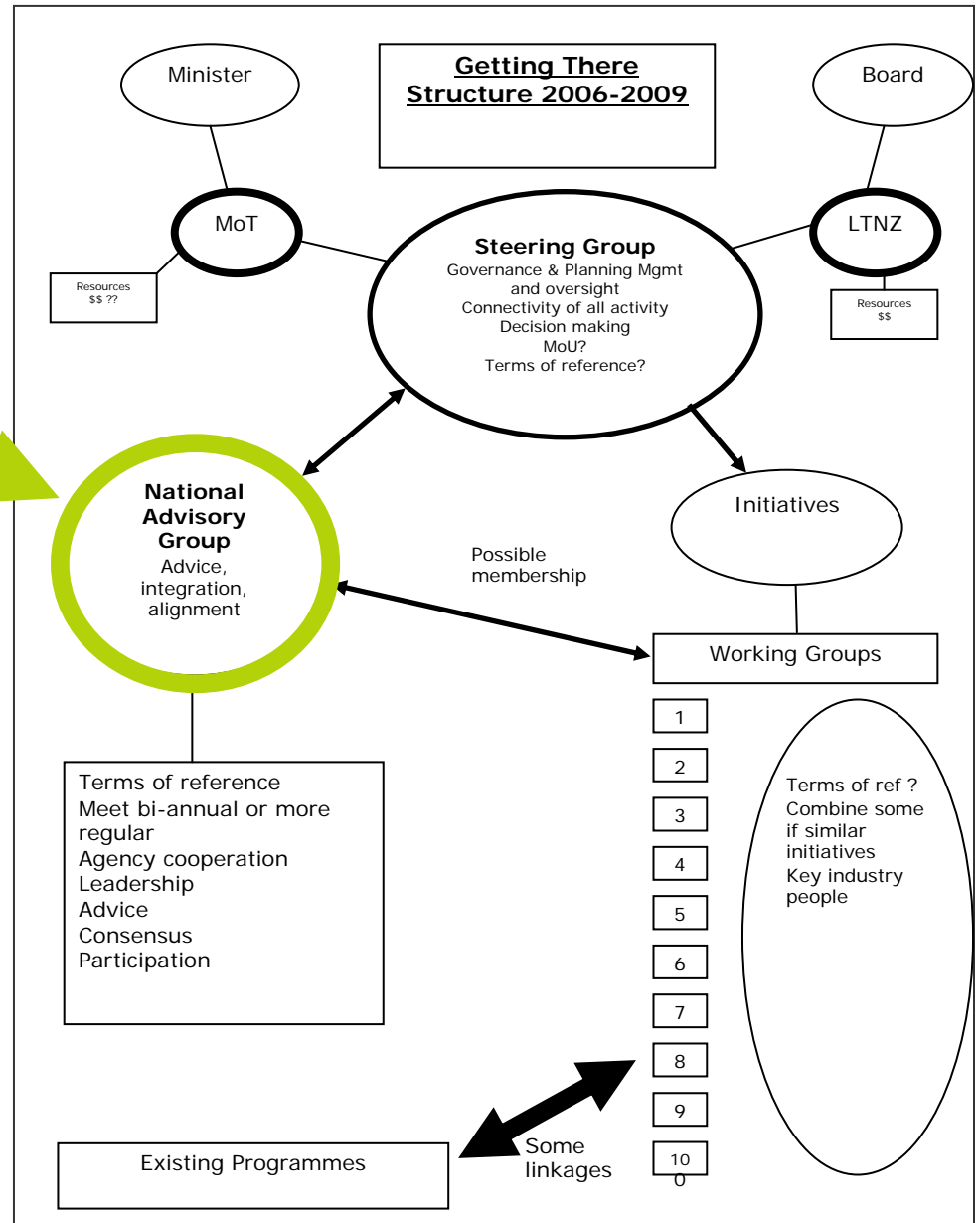
Members:

- Jason Morgan, Ministry of Transport
- Gerry Dance, Land Transport NZ
- Ian Appleton, Land Transport NZ



Getting There National Advisory Group

- Transport agencies
- Ministries of Health, Education, Environment
- SPARC
- Advocacy Groups CAN & Living Streets
- Local Government, ARTA, Greater Wgtn



Strategic New Initiatives

- 1: *GT* Research, Monitoring and Evaluation Action Plan
- 2: *GT* Transport Sector Alignment Review
- 3: *GT* Decision Maker Communication Action Plan

MOT

- 4: *GT* Information Centre
- 5: *GT* Workforce Development Action Plan
- 6: Walking and Cycling Model Communities Programme
- 7: Road Controlling Authority Benchmarking Programme
- 8: Strengthening User Group Networks Programme
- 9: Long-distance Cycle Networks Investigation Project
- 10: Expansion of road user training & education related to pedestrians & cyclists

Land Transport NZ

GT Initiative 8 Strengthening User Group Networks

Aim

- To strengthen the capacity of national and local cyclist user groups to participate effectively in transport-focussed planning and decision making processes user groups



Strengthening User Group Networks

Progress

- 3 yr programmes & contracts have been developed with CAN & LSA
- 16 cycling user groups are now established



Taupo



GT Initiative 10a Cycle Skills Training

Aim:

- To develop best practice guidelines on the minimum content and delivery standards for cycle skills education programmes in New Zealand



Cycle Skills Training

Draft Vision:

A New Zealand where every child or person has the opportunity to become a confident and capable cyclist



Nayland
Railway
Reserve
Train

Cycle Skills Training

Progress to date:

- Stage 2 nearly complete
- 2 guidelines drafted
 - 1) Cycle skills training specifications & delivery
 - 2) Instructor training course guidelines



Cycle Skills Training

Progress to date (cont.):

- 3 Day workshop held in July with Pete Zanzottera.
- The approach was to build a climate of trust amongst cycle training providers and create a unity of purpose



Cycle Skills Training

Progress to date (cont.):

- The workshop had four clear aims:
 - 1) increase on road training
 - 2) interpret differences between UK and NZ training
 - 3) work out practical ways to optimise the delivery of trainee outcomes;
 - 4) tackle the underlying fears surrounding on road cycle training



Cycle Skills Training

Progress to date (cont.):

- Trialing with Cyclesafe team @ Redwood School
- Trainers sign off outcomes whilst teaching them
- Increased on road training from 3 – 6 hours
- Std of teaching very high
- Trial however was too small to properly analyse



Cyclesafe
Christchurch

Cycle Skills Training

Redwood School on-road training



Discuss



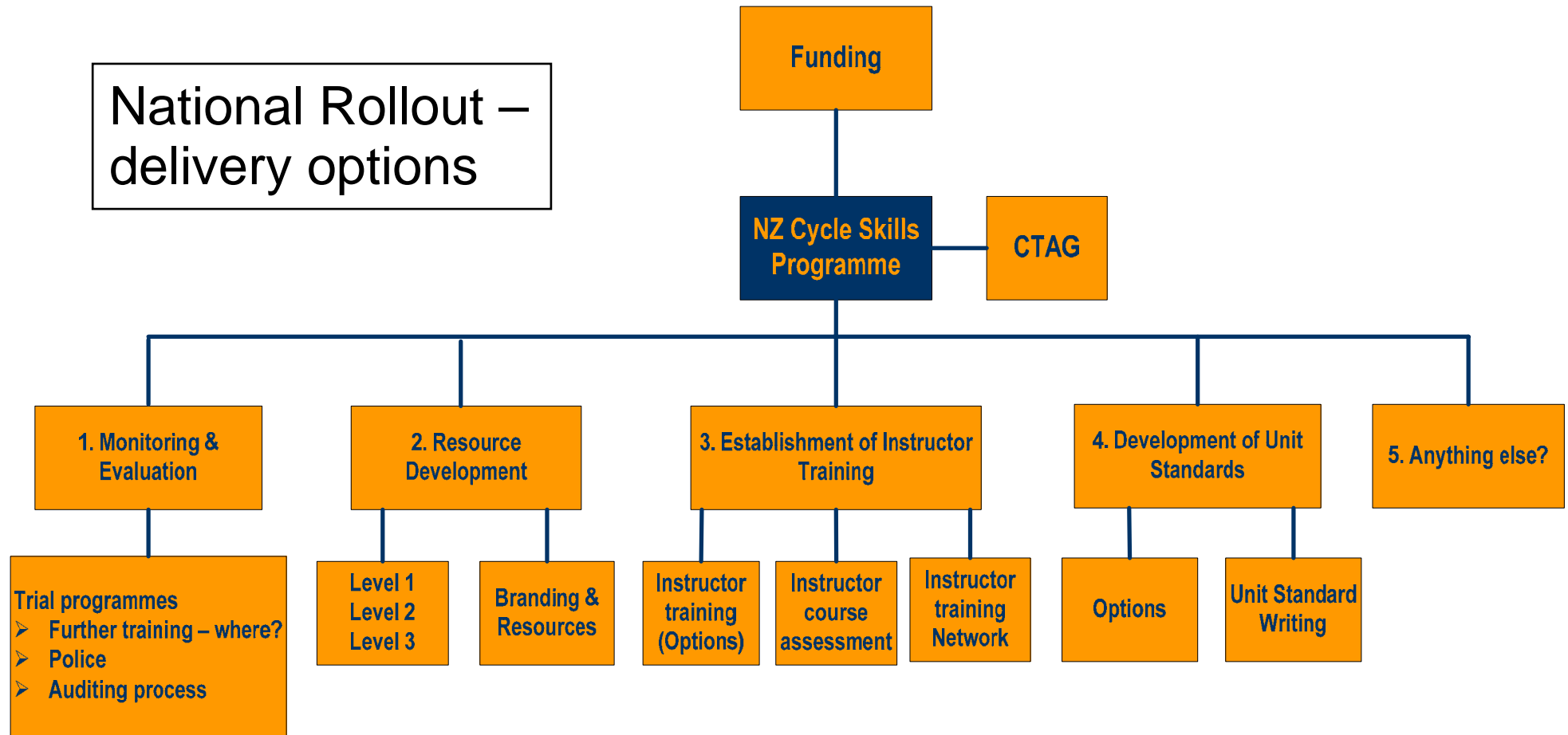
Demonstrate



Instructor coaches individual practice

Cycle Skills Training

National Rollout –
 delivery options



Cycle Skills Training

Where to from here:

- Funding arrangements for staged national rollout
- Further training and evaluation with ChCh CycleSafe
- Investigate further training in other centre's
- Monitoring and evaluation
- Investigation into developing Unit Standards through and ITO for instructor training
- Discussions and agreement with Police on involvement
- Develop teaching resource packs
- Level 3 development

GT Initiative 10b – ‘Share the road’

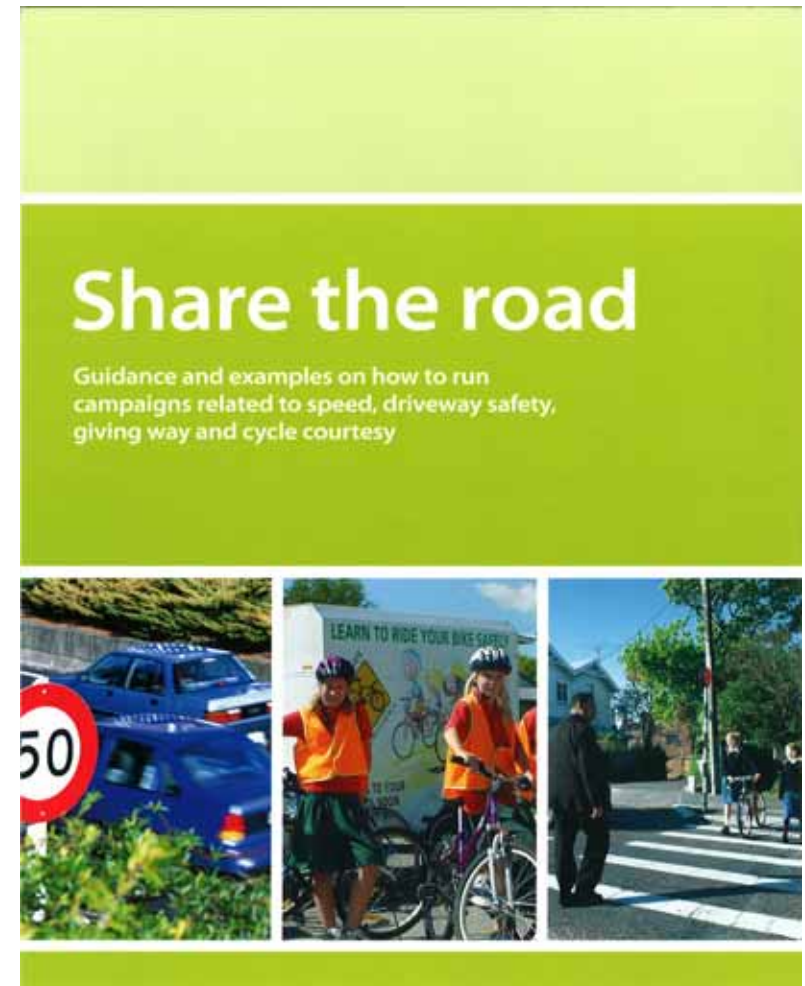
- A national programme focussed on encouraging motorists, pedestrians and cyclists to all ‘share the road’



GT Initiative 10b – 'Share the road'

Progress to date:

- 2 resources developed
 - Campaign guidance; and
 - Project examples
- Available at
 - <http://www.landtransport.govt.nz>



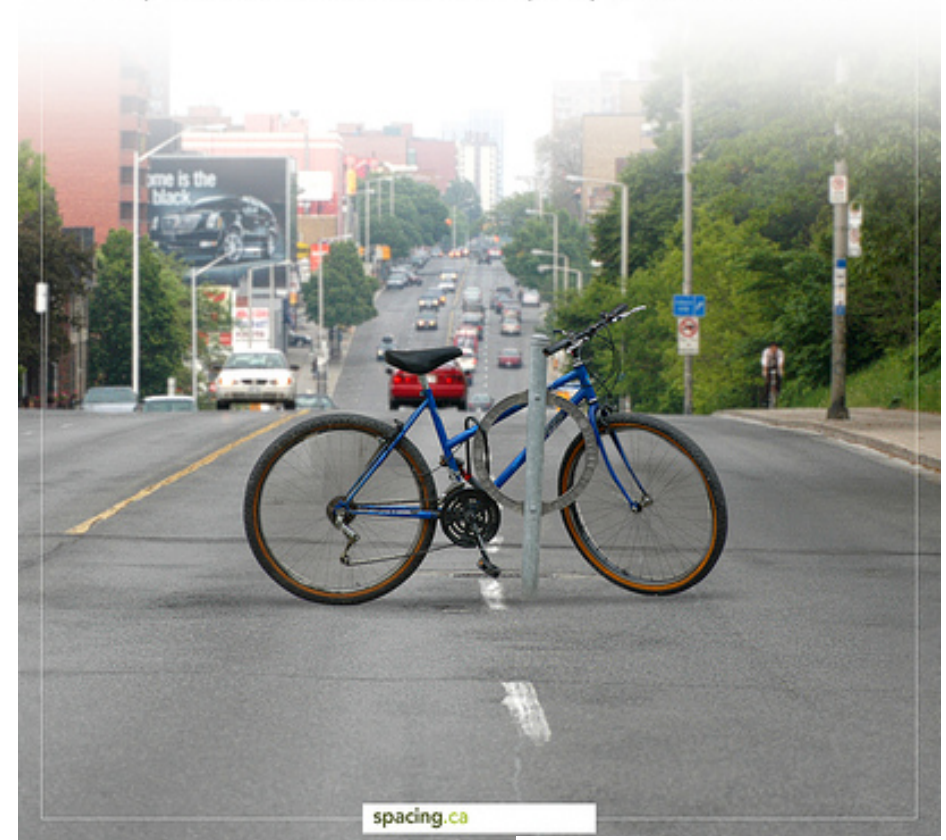
GT Initiative 5 Workforce development Plan

Aim

- To ensure that a knowledgeable and skilled workforce is in place to undertake strategy implementation nationally and on the ground

**HOW WOULD YOU LIKE IT
IF A BIKE WAS PARKED IN YOUR LANE?**

Help share our roads. Please don't park your car in a bike lane.



Workforce development Plan

Progress to date:

- Recognised skills gap in sustainable transport sector
- People capability for sustainability project underway
- Objective: develop sector capability to assist in advancing integrated transport solutions and promoting sustainable transport
- apply a knowledge management framework
- emphasis on “growing” the skills rather than “renting” or “buying” them



GT Initiative 6 Model Communities

- Scoping commencing 2007/08
- Up to four communities
- Multi-sector collaboration
- Opportunity to demonstrate the benefits of active transport (Social, Environmental, Economic)



Cairns foreshore





So where are we going ?



Accessible ?



Accessible?



Friendly?



Seductive?



Seductive?



Seductive?



Actions



- Use your bike - every trip makes a difference!
- Help to facilitate integrated local network packages – use the LTCCP process.
- Comprehensive network development plans.
- Continue to champion cycling in your organisation.

For More Information



Jason Morgan or Iain McAuley

Ministry of Transport

(04) 439 9385

(04) 439 9256

j.morgan@transport.govt.nz

i.mcauley@transport.govt.nz

Gerry Dance or Ian Appleton

Land Transport New Zealand

(04) 931 8700

gerry.dance@landtransport.govt.nz

ian.appleton@landtransport.govt.nz

Lastly for us its all about

“The right mode for the
right trip”

and

“everyone working
together to encourage
active and shared modes”

